



69 Centennial E - \$215,000.00

3 Bedroom - Bungalow Southwood Area - 77/134/834

*Large, bungalow in walking distance to hospital!
Located on buffer treeline! A great Southwood location!*



Kitchen - Large eat-in kitchen with dark wood cabinets and plenty of counter space. PVC window over double stainless steel sinks. Stainless steel appliances to stay. Vinyl flooring.

Living Room - Lots of natural light from the PVC windows and original hardwood floors.

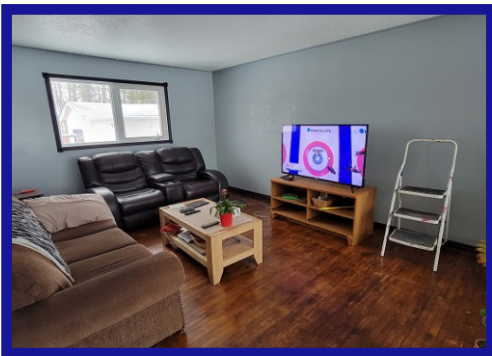
Bedrooms - 3 bedrooms on the main floor laminate flooring, ample closet space and PVC windows.

Bathrooms - 4 piece main bathroom with dark espresso vanity and tile counter top and vinyl floors. 3 piece bath down.

Lower Level - Wide open rec room with wall to wall carpet, PVC windows, drop ceiling with pot lighting and wood stove. Pool table to stay. Large laundry room.

Yard - Fully fenced and landscaped on buffer treeline with gate. Large 45' x 20' inter-locking brick patio. 16' x 16' workshop is insulated - great place for projects! Extra garden shed and metal shed. Large concrete driveway.

Extras - Great curb appeal! Front porch area. Maintenance free exterior.



Age: 1968

Lot Size: 60' x 120' (7,200 sq ft)

House Size: 1,116 sq ft

Taxes: \$3,695.21 Gross/2022 (Net \$3,257.71)

Heat: EFA (Approx. \$250.00 per month)

Possession: TBA



RE/MAX[®] THOMPSON

Each office independently owned and operated.

55 Selkirk Avenue
Thompson, MB R8N 0M5
Bus. 204-778-6303 Fax. 204-778-5652
Website: www.remaxthompson.mb.ca

This information, although believed to be accurate,
is not warranted to be so.

