



64 Goldeye Cr. - \$155,000.00

2 Bedroom - Duplex Burntwood Area - 2-27801

**Great family location for this super starter home!
Close to schools and shopping!**



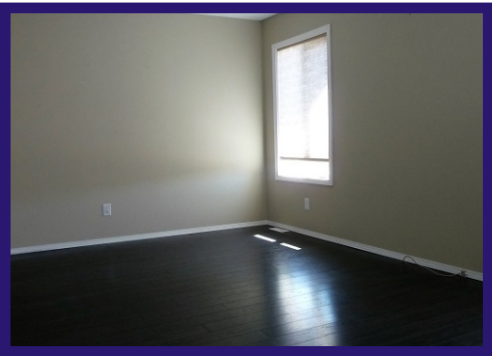
Kitchen - Large kitchen with plenty of oak cabinets and lots of counter space. Double stainless steel sinks. Built-in dishwasher. Laminate flooring.

Living Room - Living room is spacious with laminate flooring.

Bedrooms - 2 bedrooms on the main floor have double clothes closets and laminate flooring.

Bathrooms - 4 piece main bathroom with oak vanity. 3 piece bath on lower level.

Lower Level - Rec room features wall to wall carpet and large windows. Gas fireplace. Bonus room with wall to wall carpet and double closet. Laundry room.



Yard - Yard is fully fenced and landscaped. Raised wooden deck off back entrance.

Extras - Excellent starter home! 2' x 6' construction. New HRV in 2020. New fridge 2021. New shingles 2021. Freshly painted.



Age: 1992

Lot Size: 32' x 100' (3,200 sq ft)

House Size: 820 sq ft on each level

Taxes: \$3,196.59 Gross 2020 (\$2,162.66 Net)

Heat: EFA

Possession: TBA



RE/MAX[®] THOMPSON

Each office independently owned and operated.

55 Selkirk Avenue
Thompson, MB R8N 0M5
Bus. 204-778-6303 Fax. 204-778-5652
Website: www.remaxthompson.net

This information, although believed to be accurate,
is not warranted to be so.

