



71 Eider Bay - \$199,900.00

2 Bedroom - Bungalow
Westwood Area - 1/114/777

Location! Location!
Walking distance to school and shopping!



Kitchen - Nice, bright eat-in kitchen with painted Maple cabinets and laminate counter tops. Stainless steel fridge and built-in dishwasher. PVC window over double stainless steel sinks. Garden doors off the dining area lead to the raised deck. Small porch/closet addition at back entrance. Vinyl flooring.

Living Room - Lots of natural light from the large PVC picture window. Oak hardwood floors.

Bedrooms - 2 bedrooms on the main floor with laminate flooring.

Bathroom - 4 piece main bathroom features a large vanity with his/her sinks and jetted tub.

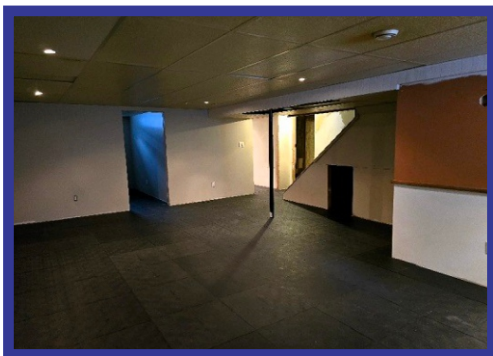
Lower Level - Partially developed. Rooms are drywalled. Suspended ceiling with recessed lighting. Plumbing roughed in for a bathroom.



Yard - Yard is partially fenced and landscaped. Raised deck. Metal shed with lean-to off the side. Asphalt driveway.

Garage - Great garage is 672 sq ft. Insulated and wired. Newer 200 amp panel.

Extras - Excellent starter home in a great family location! Newer shingles and PVC windows.



Age: 1968

Lot Size: 60' x 120' (7,200 sq ft)

House Size: 968 sq ft

Taxes:

Hydro: EFA

Possession: TBA

RE/MAX THOMPSON

Each office independently owned and operated.

55 Selkirk Avenue
Thompson, MB R8N 0M5
Bus. 204-778-6303 Fax. 204-778-5652
Website: www.remaxthompson.net

This information, although believed to be accurate,
is not warranted to be so.

