



36 Stanford Bay - \$225,000.00

2 Bedroom - Loft Style

Eastwood Area - 5/181/856

*Custom built loft style home with an amazing garage!
This home has lots to offer!*



Kitchen - Beautiful eat in kitchen features dark wood custom cabinets. Large island with sink and built in Jenn-Air stove top. Stainless steel appliances include built in oven, dishwasher and microwave (will need a fridge) Slate tile flooring and backsplash.

Living Room - Spacious and bright open to the kitchen. Maple hardwood floors large PVC picture window. Built in desk area.

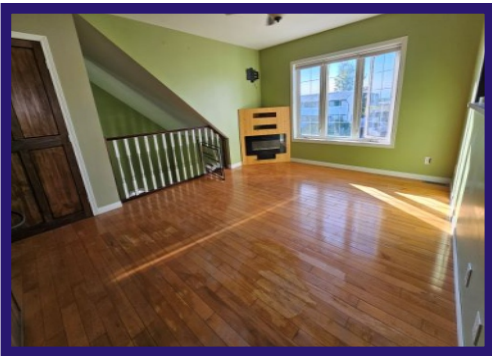
Bedrooms - Primary and guestroom but have PVC windows, maple hardwood floors and an abundance of closet space! Guest room comes with a Murphy bed.

Bathroom - 3 piece bathroom features Large stand up tile shower with waterfall shower head. Spacious corner vanity with plenty of cupboards. Custom tile work and modern fixtures.

Garage - 24' x 32' dream garage! In-floor heat, Insulated, wired, and offers Loads of storage. Drywalled and painted. Suspended ceiling. Extra workshop room. Bathroom.

Yard - A great place for some relaxation or family and friend gatherings! Two great sitting areas one with fire pit. Outdoor kitchen with counter top and large cooking space that lets you use either propane or charcoals or both! Extensive decking throughout, including a large raised deck that enters off the upper entrance of the home. Car port area off the side of garage is ideal to park a boat or any other toys. Couple extra sheds for ideal storage.

Extras - A well maintained custom home. Vinyl exterior. PVC windows throughout. 2" x 6" construction.



Age: 2008

Lot Size: Irregular(7,455 sq ft)

House Size: 1,000 sq ft

Taxes: Gross 2025 \$4,076.73 (Net \$2,576.73)

Hydro: Infloor heat

Possession: TBA

RE/MAX THOMPSON

Each office independently owned and operated.

55 Selkirk Avenue
Thompson, MB R8N 0M5
Bus. 204-778-6303 Fax. 204-778-5652
Website: www.remaxthompson.net

This information, although believed to be accurate,
is not warranted to be so.

